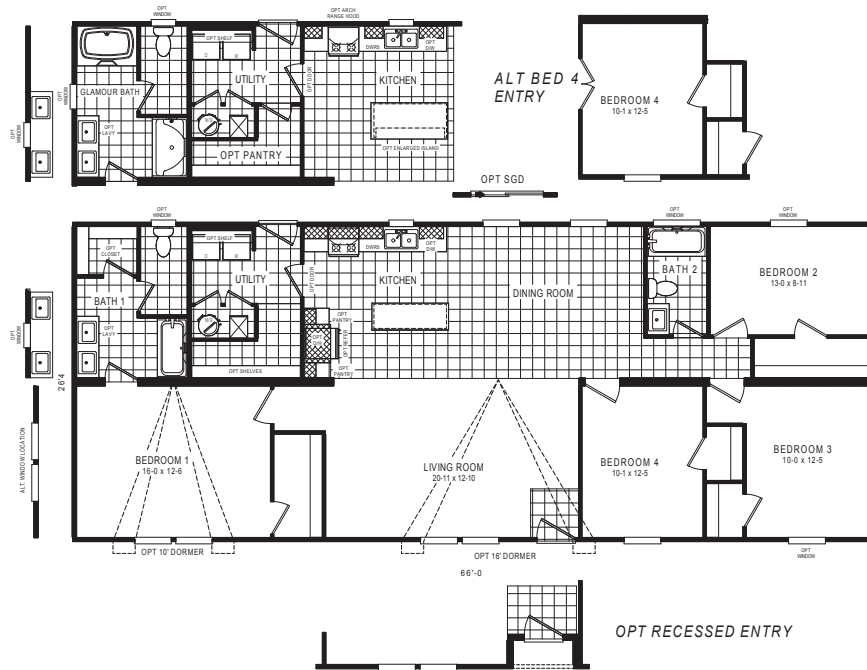


ARIZONA COLLECTION
COPPER RIDGE
— SERIES —

Copper Ridge 28x66

51ACR28664AH / 4 beds / 2 baths / 1,738 sq. ft. / 28x66



ALTA CIMA RETAIL PARTNER EXCLUSIVE

ARIZONA COLLECTION

COPPER RIDGE

SERIES

Available Options

eBuilt®

- eBuilt® Plus

Exterior

Roof load:

- 30lb
- 40lb
- 60lb
- 80lb
- 5/12 hinged roof
(Multi-section only)
- Recessed entry
- Awning ready
(Available with 20 lb roof only)
- Dormer/s
- Columns
- Craftsman style shutters
- Gable eyebrow
- Sliding glass door
- 2x6 exterior walls
- 9 ft flat ceilings
- 80" windows
- Craftsman-style front door
- 9-lite cottage rear door
- Black exterior hardware
- Smart doorbell
- Wildland urban interface (W.U.I)

Plumbing

- Stainless steel farmhouse sink
- Undermount sink (Pearl)
**Solid surface countertops required*
- Rheem® hybrid 50 gal. water heater
- Rheem® 50 gal. electric water heater
- Rheem® 40 gal. electric water heater
- Rheem® 40 gal. gas water heater
- Garbage disposal
- Glamour bath
- Upgrade primary shower (Avonite)

- 2nd vanity sink (primary bath)
- Black plumbing fixtures
- Exterior hose bibs
- Sprinkler system

Appliances

- Gas appliances
- Stainless steel refrigerator (18 C.F.)
- Stainless steel refrigerator (27 C.F.)
- Stainless steel side-by-side refrigerator (32 C.F.)
- Stainless steel french door refrigerator (32 C.F.)
- Dishwasher
- Over-the-range microwave
- Stainless steel range hood (32" European)

Electrical

- Panel: 50-amp, 100-amp with gas
- A/C ready/quick disconnect
- Exterior meter pack
- Additional can lights - living room/flex room (4)
- Additional can lights - primary bedroom (4)
- Additional can lights - secondary bedrooms (2)
- Additional exterior GFI

Interior Features

- Kitchen & bath base cabinet upgrade #1
Finished bottom, shelf where applicable, no back, black knobs
- Kitchen & bath base cabinet upgrade #2
Drawer-over-door construction, finished bottom, shelf where applicable, finished back, black pulls, ball bearing drawer guides
- Kitchen overhead cabinet upgrade #1
42" overhead cabinets, adjustable shelves (x2), finished back, black knobs

- Kitchen overhead cabinet upgrade #2
42" overhead cabinets, adjustable shelves (x2), finished back, black pulls
- Kitchen island cabinet upgrade #1
Finished bottom, shelf where applicable, finished back, black knobs, board & batten finish
- Kitchen island cabinet upgrade #2
Drawer-over-door construction, finished bottom, shelf where applicable, finished back, black pulls, board & batten finish
- Enlarged island (per print)
- Enlarged primary bathroom vanity
- Kitchen pantries (per print)
- Mechanical room pantries (per print)
- Solid surface countertops (Staron)
- Black pendant lights (x2)
- Coffee bar (per print)
- Refrigerator cabinet
- 5" baseboard
- 2" faux wood blinds
- Wire shelves
- Wood shelves
- 36" doors (per print)
- Mechanical room door
- Primary bath closet (per print)
- Utility room door
- Black towel bar & tissue holder
- Toe kick registers
- Black interior hardware
- Shaw® Vinyl flooring throughout
- Luxury vinyl plank flooring (Endura- ship loose)

Other

- _____
- _____
- _____
- _____
- _____

Decor Selection

Countertops

Siding

Island

Shutters

Floor Vinyl

Cabinets

Carpet

Customer Name _____

Customer Phone Number _____

Customer Email _____

Customer Signature _____