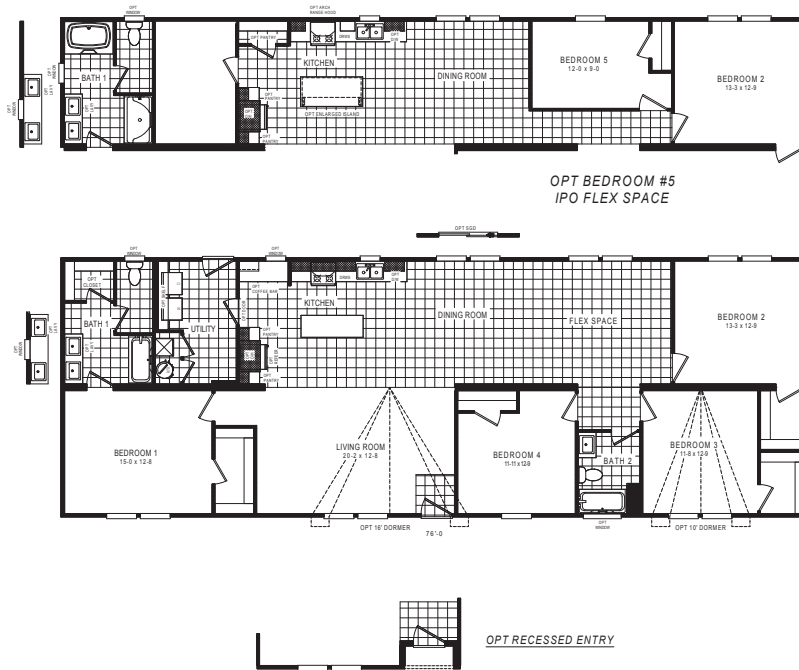


ARIZONA COLLECTION  
**COPPER RIDGE**  
— SERIES —

# Copper Ridge 28x76

51ACR28764AH / 4 beds / 2 baths / 2,001 sq. ft. / 28x76



**ALTA CIMA RETAIL PARTNER EXCLUSIVE**

[claytonbuiltbuckeye.com](http://claytonbuiltbuckeye.com)

The home series, floor plans, photos, renderings, specifications, features, pricing, materials and availability shown will vary by retailer and state, and are subject to change without notice.



# ARIZONA COLLECTION

## COPPER RIDGE

### SERIES

### Available Options

#### eBuilt®

- eBuilt® Plus

#### Exterior

##### Roof load:

- 30lb
- 40lb
- 60lb
- 80lb
- 5/12 hinged roof  
*(Multi-section only)*
- Recessed entry
- Awning ready  
*(Available with 20 lb roof only)*
- Dormer/s
- Columns
- Craftsman style shutters
- Gable eyebrow
- Sliding glass door
- 2x6 exterior walls
- 9 ft flat ceilings
- 80" windows
- Craftsman-style front door
- 9-lite cottage rear door
- Black exterior hardware
- Smart doorbell
- Wildland urban interface (W.U.I)

#### Plumbing

- Stainless steel farmhouse sink
- Undermount sink (Pearl)  
*\*Solid surface countertops required*
- Rheem® hybrid 50 gal. water heater
- Rheem® 50 gal. electric water heater
- Rheem® 40 gal. electric water heater
- Rheem® 40 gal. gas water heater
- Garbage disposal
- Glamour bath
- Upgrade primary shower (Avonite)

- 2nd vanity sink (primary bath)
- Black plumbing fixtures
- Exterior hose bibs
- Sprinkler system

#### Appliances

- Gas appliances
- Stainless steel refrigerator (18 C.F.)
- Stainless steel refrigerator (27 C.F.)
- Stainless steel side-by-side refrigerator (32 C.F.)
- Stainless steel french door refrigerator (32 C.F.)
- Dishwasher
- Over-the-range microwave
- Stainless steel range hood (32" European)

#### Electrical

- Panel: 50-amp, 100-amp with gas
- A/C ready/quick disconnect
- Exterior meter pack
- Additional can lights - living room/flex room (4)
- Additional can lights - primary bedroom (4)
- Additional can lights - secondary bedrooms (2)
- Additional exterior GFI

#### Interior Features

- Kitchen & bath base cabinet upgrade #1  
*Finished bottom, shelf where applicable, no back, black knobs*
- Kitchen & bath base cabinet upgrade #2  
*Drawer-over-door construction, finished bottom, shelf where applicable, finished back, black pulls, ball bearing drawer guides*
- Kitchen overhead cabinet upgrade #1  
*42" overhead cabinets, adjustable shelves (x2), finished back, black knobs*

- Kitchen overhead cabinet upgrade #2  
*42" overhead cabinets, adjustable shelves (x2), finished back, black pulls*
- Kitchen island cabinet upgrade #1  
*Finished bottom, shelf where applicable, finished back, black knobs, board & batten finish*
- Kitchen island cabinet upgrade #2  
*Drawer-over-door construction, finished bottom, shelf where applicable, finished back, black pulls, board & batten finish*
- Enlarged island (per print)
- Enlarged primary bathroom vanity
- Kitchen pantries (per print)
- Mechanical room pantries (per print)
- Solid surface countertops (Staron)
- Black pendant lights (x2)
- Coffee bar (per print)
- Refrigerator cabinet
- 5" baseboard
- 2" faux wood blinds
- Wire shelves
- Wood shelves
- 36" doors (per print)
- Mechanical room door
- Primary bath closet (per print)
- Utility room door
- Black towel bar & tissue holder
- Toe kick registers
- Black interior hardware
- Shaw® Vinyl flooring throughout
- Luxury vinyl plank flooring (Endura- ship loose)

#### Other

- \_\_\_\_\_
- \_\_\_\_\_
- \_\_\_\_\_
- \_\_\_\_\_
- \_\_\_\_\_

### Decor Selection

#### Countertops

\_\_\_\_\_

#### Siding

\_\_\_\_\_

#### Island

\_\_\_\_\_

#### Shutters

\_\_\_\_\_

#### Floor Vinyl

\_\_\_\_\_

#### Cabinets

\_\_\_\_\_

#### Carpet

\_\_\_\_\_

Customer Name \_\_\_\_\_

Customer Phone Number \_\_\_\_\_

Customer Email \_\_\_\_\_

Customer Signature \_\_\_\_\_