

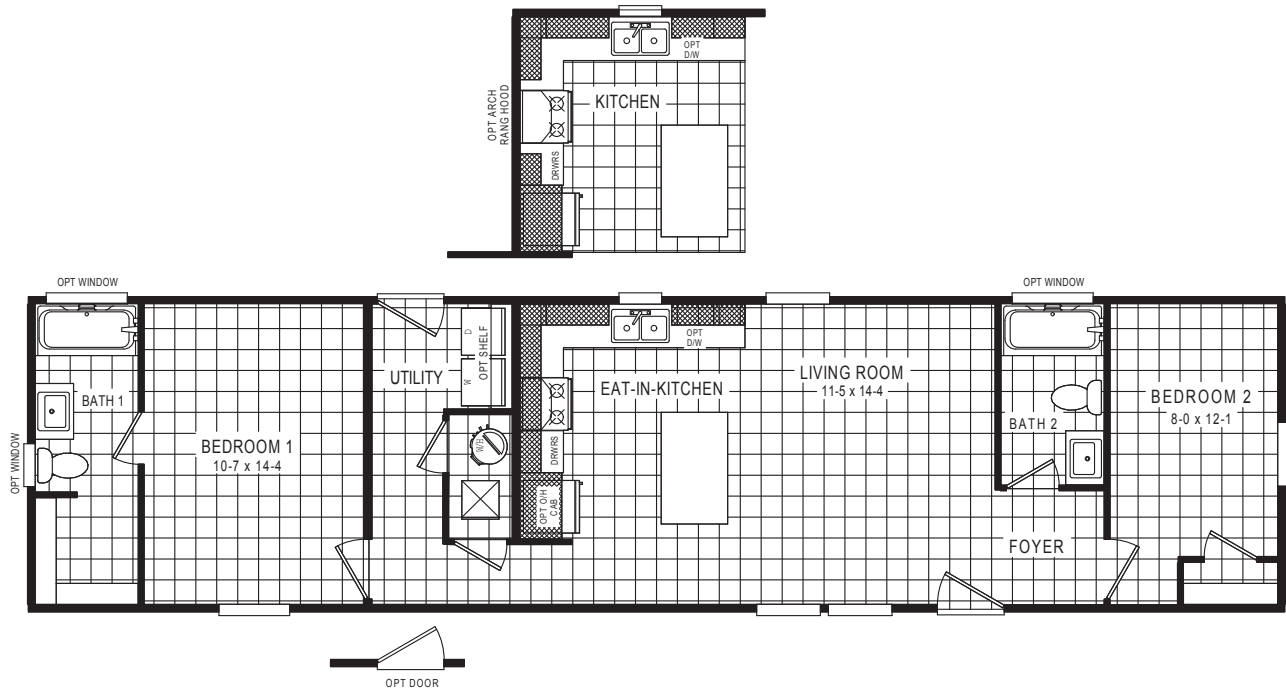
# ARIZONA COLLECTION

# RED ROCK

— SERIES —

## Red Rock 16x60

51ARR16602AH / 2 beds / 2 baths / 900 sq. ft. / 16x60



CLAYTON RETAIL PARTNER EXCLUSIVE

[claytonbuiltbuckeye.com](http://claytonbuiltbuckeye.com)

The home series, floor plans, photos, renderings, specifications, features, pricing, materials and availability shown will vary by retailer and state, and are subject to change without notice.

Clayton  
buckeye

Clayton  
Built

# ARIZONA COLLECTION

## RED ROCK

### — SERIES —

### Available Options

#### eBuilt®

- eBuilt® Plus

#### Exterior

##### Roof load:

- 30lb
- 40lb
- 60lb
- 80lb
- 5/12 hinged roof  
*(Multi-section only)*
- Recessed entry
- Awning ready  
*(Available with 20 lb roof only)*
- Dormer/s
- Columns
- Craftsman style shutters
- Gable eyebrow
- Sliding glass door
- 2x6 exterior walls
- 9 ft flat ceilings
- 80" windows
- Craftsman-style front door
- 9-lite cottage rear door
- Black exterior hardware
- Smart doorbell
- Wildland urban interface (W.U.I)

#### Plumbing

- Stainless steel farmhouse sink
- Undermount sink (Pearl)  
*\*Solid surface countertops required*
- Rheem® hybrid 50 gal. water heater
- Rheem® 50 gal. electric water heater
- Rheem® 40 gal. electric water heater
- Rheem® 40 gal. gas water heater
- Garbage disposal
- Glamour bath
- Upgrade primary shower (Avonite)

- 2nd vanity sink (primary bath)
- Black plumbing fixtures
- Exterior hose bibs
- Sprinkler system

#### Appliances

- Gas appliances
- Stainless steel refrigerator (18 C.F.)
- Stainless steel refrigerator (27 C.F.)
- Stainless steel side-by-side refrigerator (32 C.F.)
- Stainless steel french door refrigerator (32 C.F.)
- Dishwasher
- Over-the-range microwave
- Stainless steel range hood (32" European)

#### Electrical

- Panel: 50-amp, 100-amp with gas
- A/C ready/quick disconnect
- Exterior meter pack
- Additional can lights - living room/flex room (4)
- Additional can lights - primary bedroom (4)
- Additional can lights - secondary bedrooms (2)
- Additional exterior GFI

#### Interior Features

- Kitchen & bath base cabinet upgrade  
*Drawer-over-door construction, finished bottom, shelf where applicable, finished back, black pulls, ball bearing drawer guides*
- Kitchen overhead cabinet upgrade #1  
*42" overhead cabinets, adjustable shelves (x2), finished back, black knobs*
- Kitchen overhead cabinet upgrade #2  
*42" overhead cabinets, adjustable shelves (x2), finished back, black pulls*

- Kitchen island cabinet upgrade #1  
*Finished bottom, shelf where applicable, finished back, black knobs, board & batten finish*
- Kitchen island cabinet upgrade #2  
*Drawer-over-door construction, finished bottom, shelf where applicable, finished back, black pulls, board & batten finish*
- Enlarged island (per print)
- Enlarged primary bathroom vanity
- Kitchen pantries (per print)
- Mechanical room pantries (per print)
- Solid surface countertops (Staron)
- Black pendant lights (x2)
- Coffee bar (per print)
- Refrigerator cabinet
- 5" baseboard
- 2" faux wood blinds
- Wire shelves
- Wood shelves
- 36" doors (per print)
- Mechanical room door
- Primary bath closet (per print)
- Utility room door
- Black towel bar & tissue holder
- Toe kick registers
- Black interior hardware
- Shaw® Vinyl flooring throughout
- Luxury vinyl plank flooring (Endura- ship loose)

#### Other

- \_\_\_\_\_
- \_\_\_\_\_
- \_\_\_\_\_
- \_\_\_\_\_
- \_\_\_\_\_

### Decor Selection

#### Countertops

\_\_\_\_\_

#### Siding

\_\_\_\_\_

#### Island

\_\_\_\_\_

#### Shutters

\_\_\_\_\_

#### Floor Vinyl

\_\_\_\_\_

#### Cabinets

\_\_\_\_\_

#### Carpet

\_\_\_\_\_

Customer Name \_\_\_\_\_

Customer Phone Number \_\_\_\_\_

Customer Email \_\_\_\_\_

Customer Signature \_\_\_\_\_