

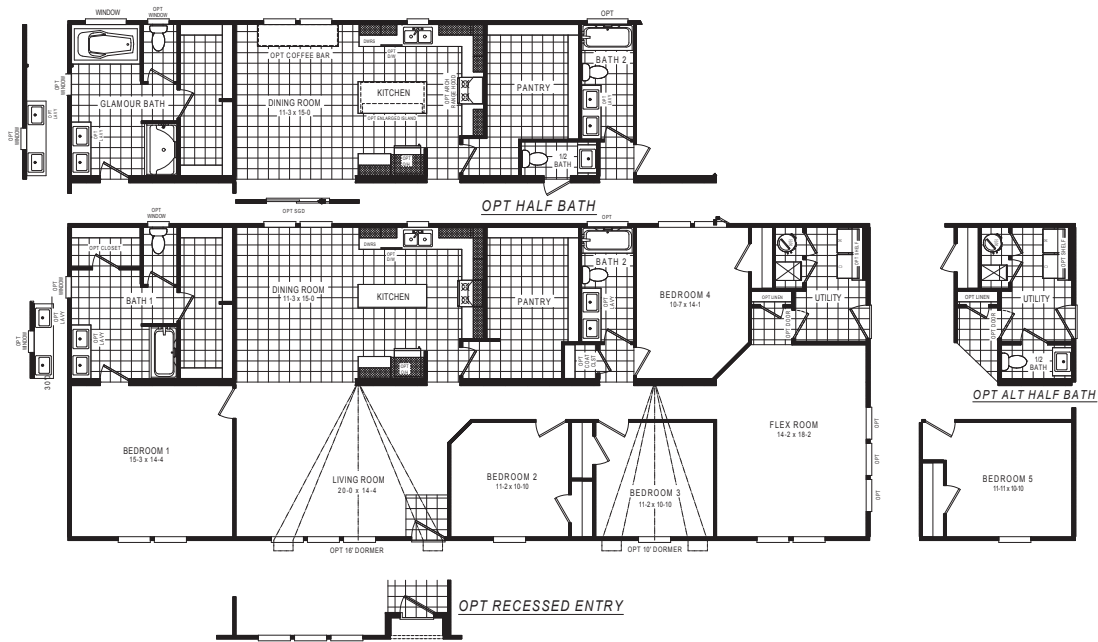
ARIZONA COLLECTION

RED ROCK

— SERIES —

Red Rock 32x76

51ARR32764AH / 4 beds / 2 baths / 2,280 sq. ft. / 32x76



CLAYTON RETAIL PARTNER EXCLUSIVE

claytonbuiltbuckeye.com

The home series, floor plans, photos, renderings, specifications, features, pricing, materials and availability shown will vary by retailer and state, and are subject to change without notice.



ARIZONA COLLECTION

RED ROCK

SERIES

Available Options

eBuilt®

- eBuilt® Plus

Exterior

Roof load:

- 30lb
- 40lb
- 60lb
- 80lb
- 5/12 hinged roof
(Multi-section only)
- Recessed entry
- Awning ready
(Available with 20 lb roof only)
- Dormer/s
- Columns
- Craftsman style shutters
- Gable eyebrow
- Sliding glass door
- 2x6 exterior walls
- 9 ft flat ceilings
- 80" windows
- Craftsman-style front door
- 9-lite cottage rear door
- Black exterior hardware
- Smart doorbell
- Wildland urban interface (W.U.I)

Plumbing

- Stainless steel farmhouse sink
- Undermount sink (Pearl)
**Solid surface countertops required*
- Rheem® hybrid 50 gal. water heater
- Rheem® 50 gal. electric water heater
- Rheem® 40 gal. electric water heater
- Rheem® 40 gal. gas water heater
- Garbage disposal
- Glamour bath
- Upgrade primary shower (Avonite)

- 2nd vanity sink (primary bath)
- Black plumbing fixtures
- Exterior hose bibs
- Sprinkler system

Appliances

- Gas appliances
- Stainless steel refrigerator (18 C.F.)
- Stainless steel refrigerator (27 C.F.)
- Stainless steel side-by-side refrigerator (32 C.F.)
- Stainless steel french door refrigerator (32 C.F.)
- Dishwasher
- Over-the-range microwave
- Stainless steel range hood (32" European)

Electrical

- Panel: 50-amp, 100-amp with gas
- A/C ready/quick disconnect
- Exterior meter pack
- Additional can lights - living room/flex room (4)
- Additional can lights - primary bedroom (4)
- Additional can lights - secondary bedrooms (2)
- Additional exterior GFI

Interior Features

- Kitchen & bath base cabinet upgrade
Drawer-over-door construction, finished bottom, shelf where applicable, finished back, black pulls, ball bearing drawer guides
- Kitchen overhead cabinet upgrade #1
42" overhead cabinets, adjustable shelves (x2), finished back, black knobs
- Kitchen overhead cabinet upgrade #2
42" overhead cabinets, adjustable shelves (x2), finished back, black pulls

- Kitchen island cabinet upgrade #1
Finished bottom, shelf where applicable, finished back, black knobs, board & batten finish
- Kitchen island cabinet upgrade #2
Drawer-over-door construction, finished bottom, shelf where applicable, finished back, black pulls, board & batten finish
- Enlarged island (per print)
- Enlarged primary bathroom vanity
- Kitchen pantries (per print)
- Mechanical room pantries (per print)
- Solid surface countertops (Staron)
- Black pendant lights (x2)
- Coffee bar (per print)
- Refrigerator cabinet
- 5" baseboard
- 2" faux wood blinds
- Wire shelves
- Wood shelves
- 36" doors (per print)
- Mechanical room door
- Primary bath closet (per print)
- Utility room door
- Black towel bar & tissue holder
- Toe kick registers
- Black interior hardware
- Shaw® Vinyl flooring throughout
- Luxury vinyl plank flooring (Endura- ship loose)

Other

- _____
- _____
- _____
- _____

Decor Selection

Countertops

Siding

Island

Shutters

Floor Vinyl

Cabinets

Carpet

Customer Name _____

Customer Phone Number _____

Customer Email _____

Customer Signature _____